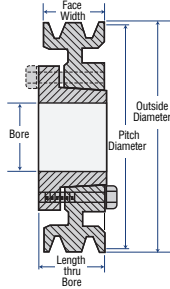
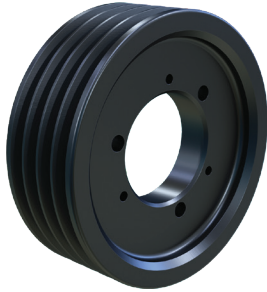




SHEAVE Nomenclature



HIGH CAPACITY SHEAVE

QD

CONVENTIONAL SHEAVE

of Grooves **2 3V 220 JA**

Belt Selection
3V, 5V, 8V

Outside Diameter
2 decimal points: 2.20"

Bushing

12 D 580 P Bushing

Datum Diameter
1 decimal point: 58.0"

Belt Selection
B (A/B), C, D

of Grooves

HIGH CAPACITY SHEAVE

TB*

CONVENTIONAL SHEAVE

of Grooves **10 8V 3000 TB**

Belt Selection
3V, 5V, 8V

Outside Diameter
2 decimal points: 30.00"

Bushing

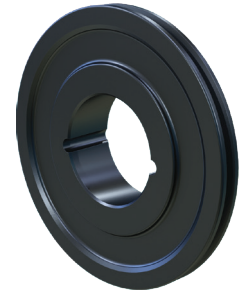
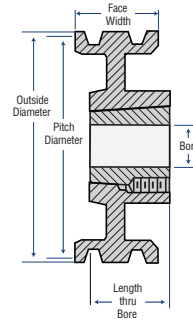
*Please visit our catalog at martinsprocket.com for more bushing series information.

1 B 34 TB Bushing

Datum Diameter
1 decimal point: 3.4"

Belt Selection
B (A/B), C, D

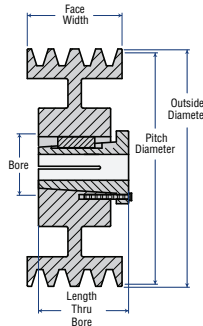
of Grooves



HIGH CAPACITY SHEAVE

MST®*

CONVENTIONAL SHEAVE



of Grooves **1 3V 300 G**

Belt Selection
3V, 5V, 8V

Outside Diameter
2 decimal points: 3.00"

Bushing

*Please visit our catalog at martinsprocket.com for more bushing series information.

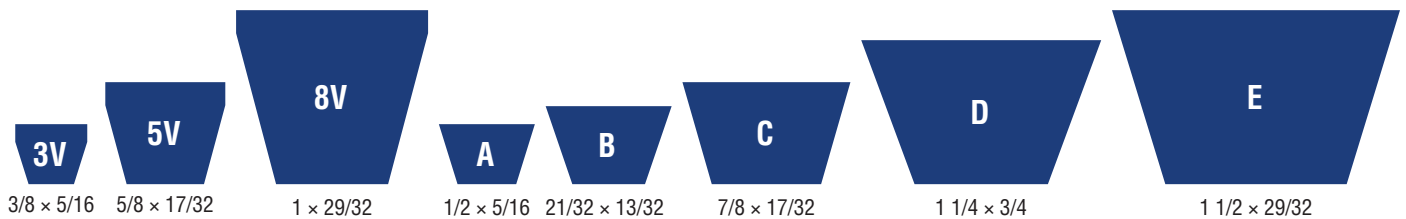
10 C 140 R Bushing

Datum Diameter
1 decimal point: 14.0"

Belt Selection
B (A/B), C, D

of Grooves

Belt Cross Section



MTO Sheave Capabilities

- Ductile Iron, Steel, Aluminum, Cast Iron
- Fractional Horsepower
- Poly V
- Deep Groove
- E Section
- Finished Bore
- Idler Wheels
- Flat Pulleys
- Fly Wheels
- Wire Rope
- Crusher Duty

General Balancing Guidelines

- **6,500 FPM & Less:** Cast Iron, Static Balance (Martin Stock Sheaves).
- **6,501 FPM and Over:** Ductile Iron or Steel, Dynamic Balance.
- $FPM = 0.262 \times OD \times RPM$
- Contact Martin for specific application assistance.

martinsprocket.com - 817.258.3000