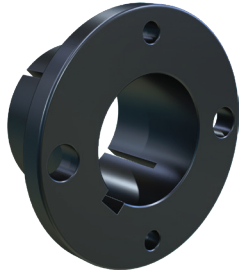
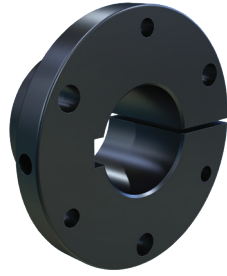




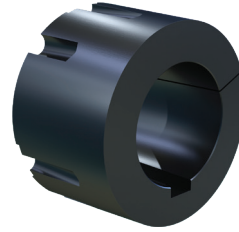
# BUSHING Nomenclature



MST®



QD



TB



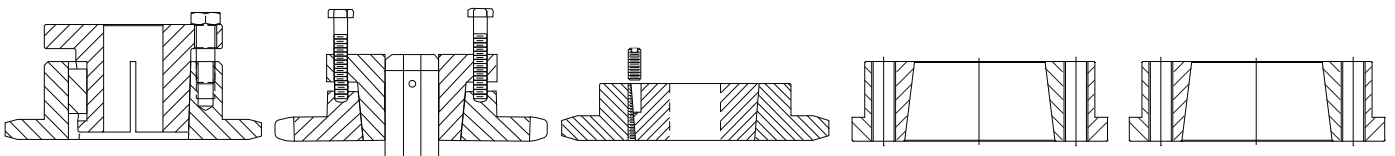
MXT & M-HE

Characteristics	MST® Martin Split Taper	QD Quick Detachable	TB Taper Bushed	MXT Martin XT	M-HE Martin HE
Stock Bore Range	3/8" – 7 7/16"	3/8" – 10"	1/2" – 12"	5/8" – 12"	1" – 8"
Taper on Barrel*	3/4 in/ft	3/4 in/ft	1.678 in/ft	2 in/ft	3 in/ft
Material	Iron, Steel	Iron, Steel, Stainless	Iron, Steel, Stainless	Iron, Steel	Iron, Steel
Reverse Mount Capability	No	Yes (Thru "J")	No	No	No
Flange	Yes	Yes	No	Yes	Yes
External Key	Yes	No	No	No	No
Split	Double through barrel only	Single through whole bushing	Single through whole bushing	Single through whole bushing	Single through whole bushing
Interchangeability of Bushing Styles***	None	None	None	None	None

\* Definition: Barrel - The portion of the bushing extending from the flange to the end.

\*\*\* Note: Bushing styles are not interchangeable (Example: QD must be used with QD products, TB must be used with TB products, etc.) but each type is interchangeable with the same type made by other manufacturers.

Bushing Style	Basic Part Description (followed by bore size):
MST®	G, H, P1, P2, P3, Q1, Q2, Q3, R1, R2, S1, S2, U0, U1, U2, W1, W2
QD	JA, SH, SDS, SD, SK, SF, E, F, J, M, N, P, W, S
TB	1008, 1108, 1210, 1215, 1310, 1610, 1615, 2012, 2517, 2525, 3020, 3030, 3525, 3535, 4030, 4040, 4535, 4545, 5040, 5050, 6050, 7060, 8065, 10085, 120100.
MXT	MXT15, MXT20, MXT25, MXT30, MXT35, MXT40, MXT45, MXT50, MXT60, MXT70, MXT80, MXT100, MXT120
M-HE	M-HE 25, M-HE 30, M-HE 35, M-HE 40, M-HE 45, M-HE 50, M-HE 60, M-HE 70, M-HE 80



**WARNING: USE OF ANTI-SEIZE LUBRICANT ON TAPERED CONE SURFACES OR ON BOLT THREADS WHEN MOUNTING MAY RESULT IN DAMAGE TO SHEAVES AND SPROCKETS. THIS VOIDS ALL MANUFACTURERS' WARRANTIES.**

[martinsprocket.com](http://martinsprocket.com) - 817.258.3000